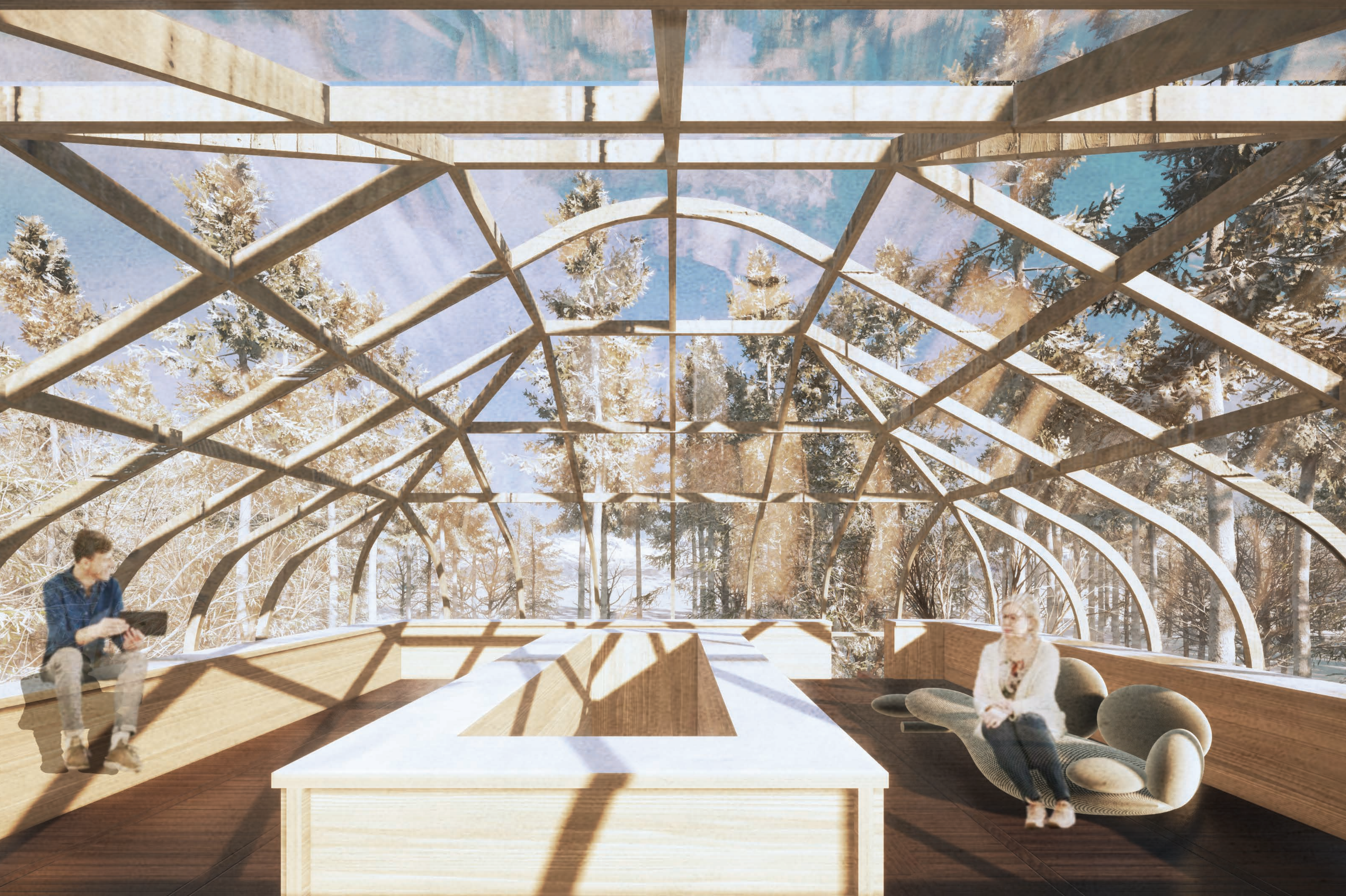


Xover-House

- Crossover of the Production Systems in Each Country -

Top: View of the facade of *I. Archetype*. Bottom: Interior view on the rooftop.





<Usages of Xover-House>

Xover-House is a common module prototype house that uses production systems in Japan and other countries like Finland. Finland has short daylight hours and has a habit of going out during the day, no matter how cold it is. Therefore, we covered the house with a dome where we could feel the sun. The top figure shows examples of the use of each Xover-House by combining welfare/industry and unique/universal. This is a special design in which the same archetype can cross over various usages.

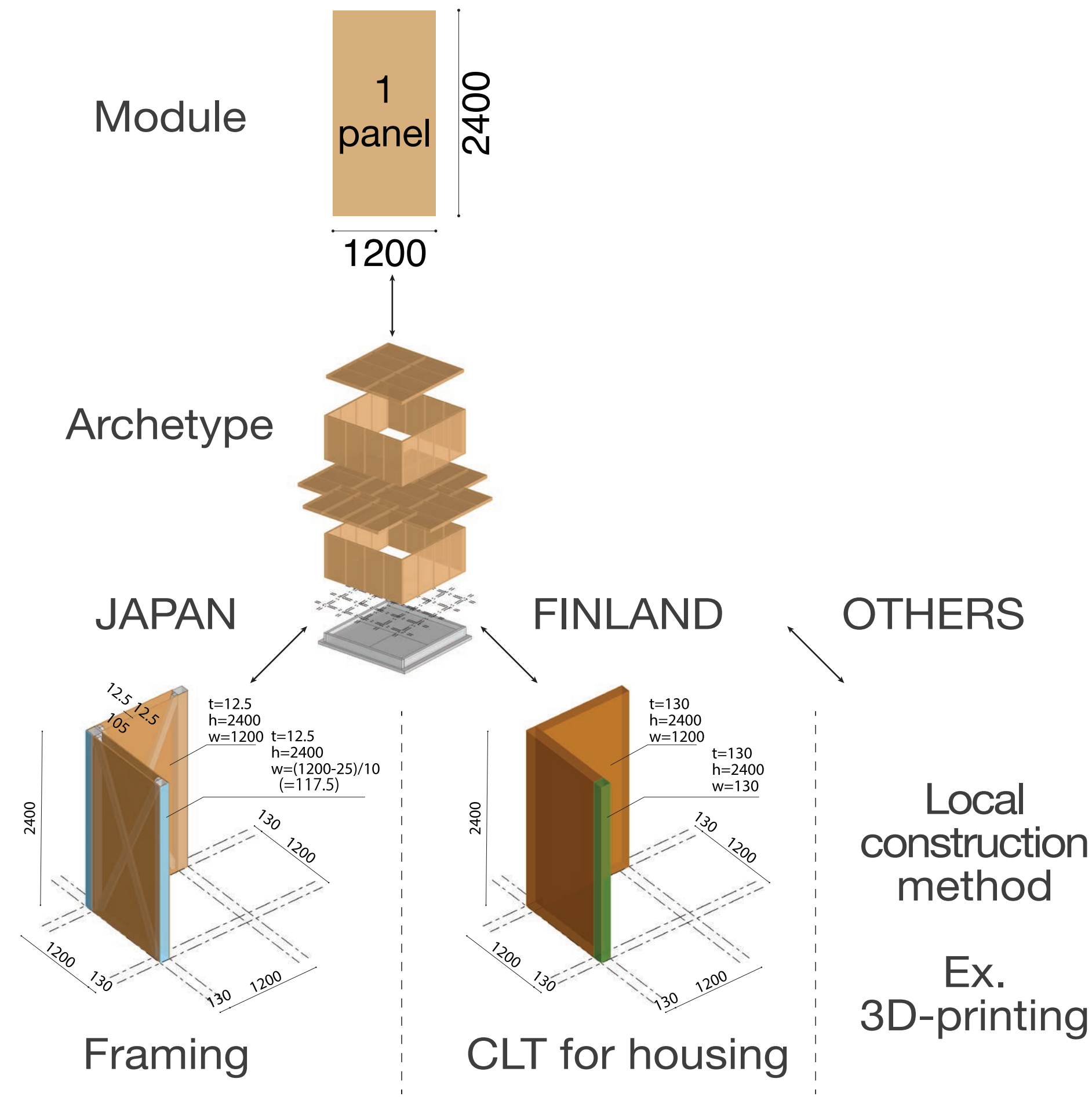
Type I (welfare and universal) is a project aimed at a wooden detached welfare house. We assume an environment surrounded by nature, such as urban suburbs and summer resorts. It is also a new image of housing in a remote society and is suitable for second houses, villas in the woods, camping cottages, etc. Even in Finland, where many forests exist, wooden houses are relatively expensive, and welfare housing is still predominantly concrete block construction. We are proposing this as an alternative to them.

Type II (social and unique) is a length-themed version that can last forever. We are preparing a proposal to the Finnish Housing Policy Bureau to be a

prototype of individual social housing. Connecting the archetypes makes it possible to freely set the division and arrange the floor plan. In addition to housing, it can also be used as a versatile complex.

Type III (industrial and unique) high-spec homes are rich in cutting-edge technology, including membership resorts, yachts, golf and horseback riding clubhouses, and individual cottages just for viewing the stars and aurora borealis. It is a version equipped with an interior. We have already asked a particular house builder company to cooperate as a dealer, and we have begun to create a new business model in which excellent construction companies are registered and introduced.

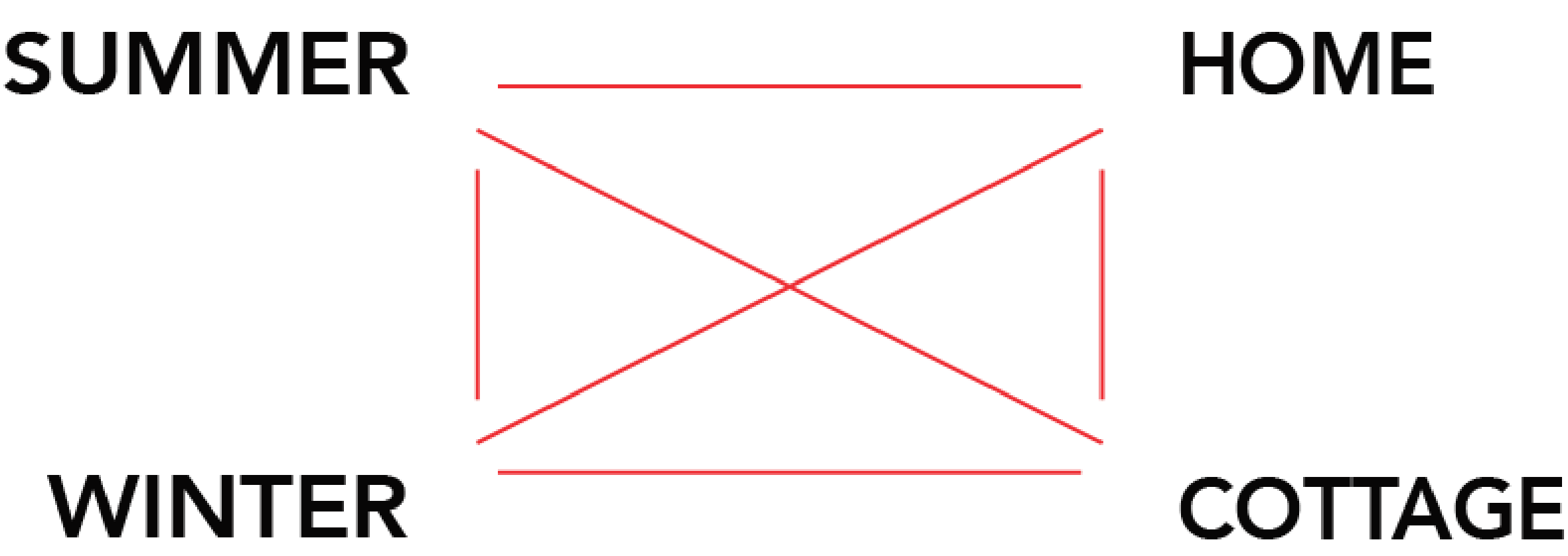
Type IV (industrial and universal) is a city-adaptable version. Properly using the entire interior space and the solarium part is considered a part of the harbour market by putting the necessary functions such as stores, showrooms, cafes and backyards in one building.



<Construction Conversion>

We have found a common module for housing production systems in Japan and other countries such as Finland. It is a size of 1200 x 2400 mm, the 4 x 8 size in Japan and the standard size in Finland. The project of Xover-House is an attempt to provide industrial design houses that can be built in Finland and Japan with this size as the module.

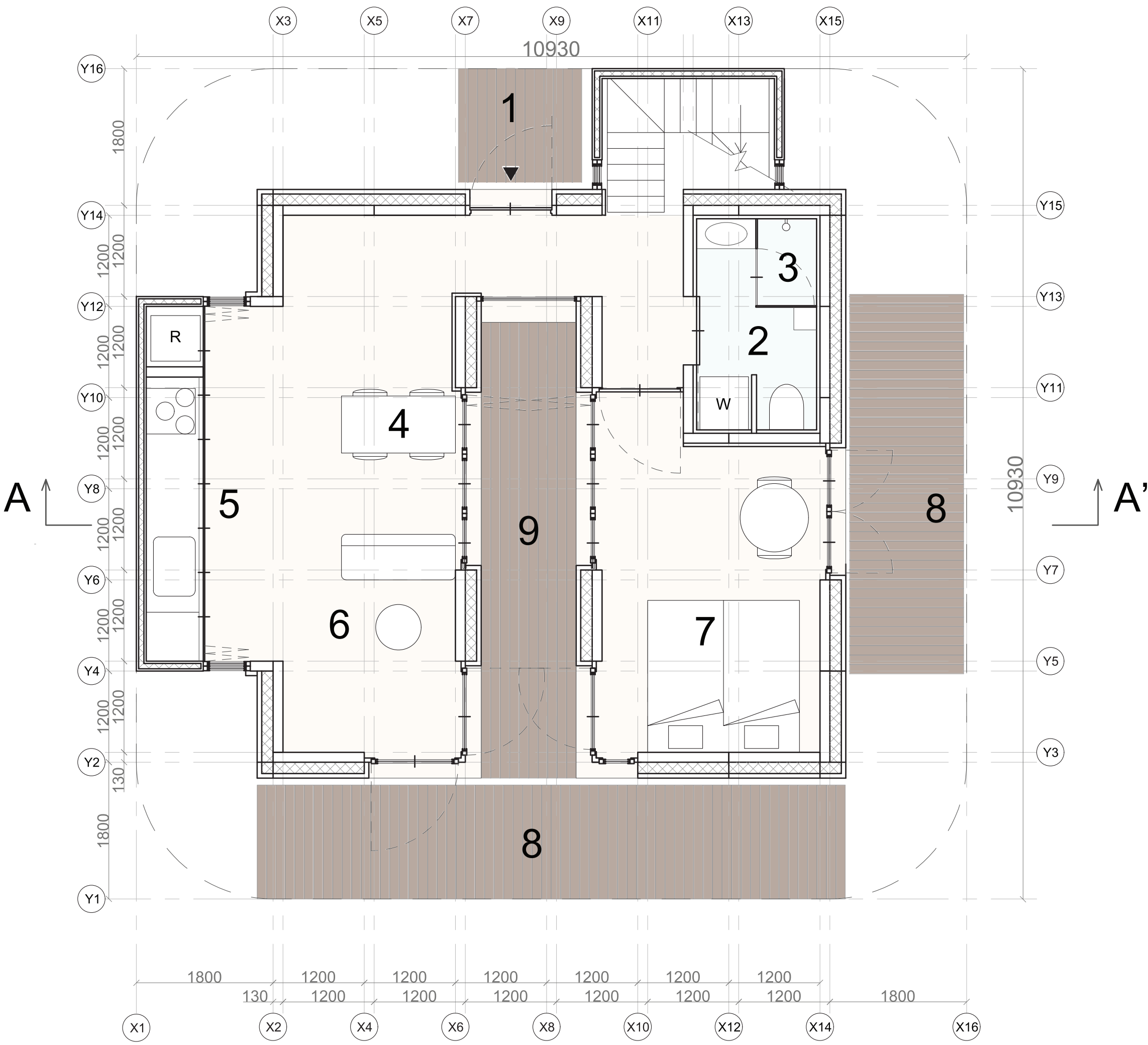
In Japan, it is possible to build by framing, and in Finland, it is possible to construct with CLT panels for housing, which can significantly reduce the construction cost. Furthermore, it can support the latest technologies like construction methods using 3D printers.



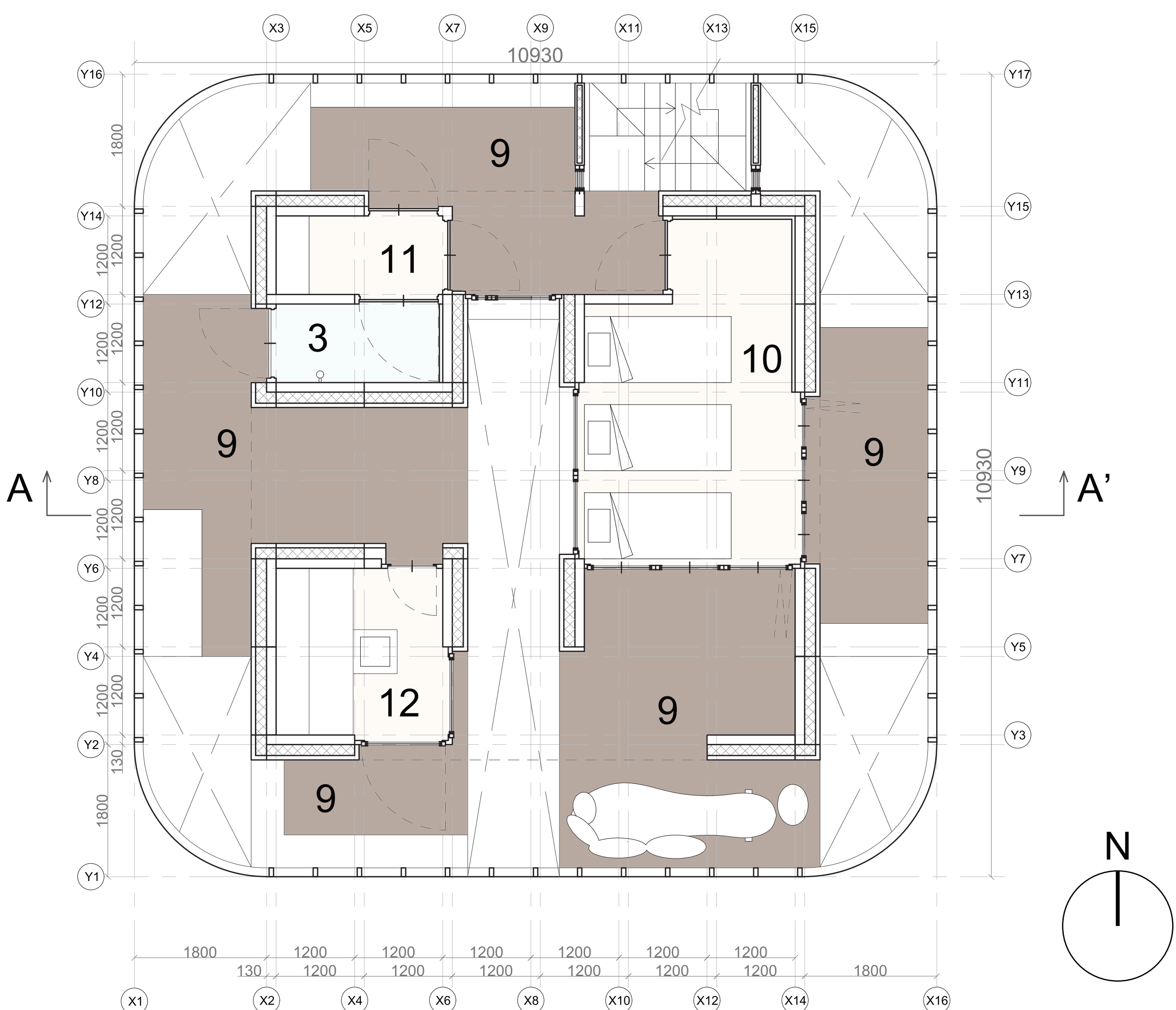
<Season and Activities>

Due to the boom in detached houses and soaring timber prices due to the COVID-19 pandemic, it is an era when even homes cannot be obtained, let alone cottages. But, then, we can make a house that can build in various environments according to our home's season and purpose. Therefore, prototypes that suit modern consumer orientation have multiple possibilities.

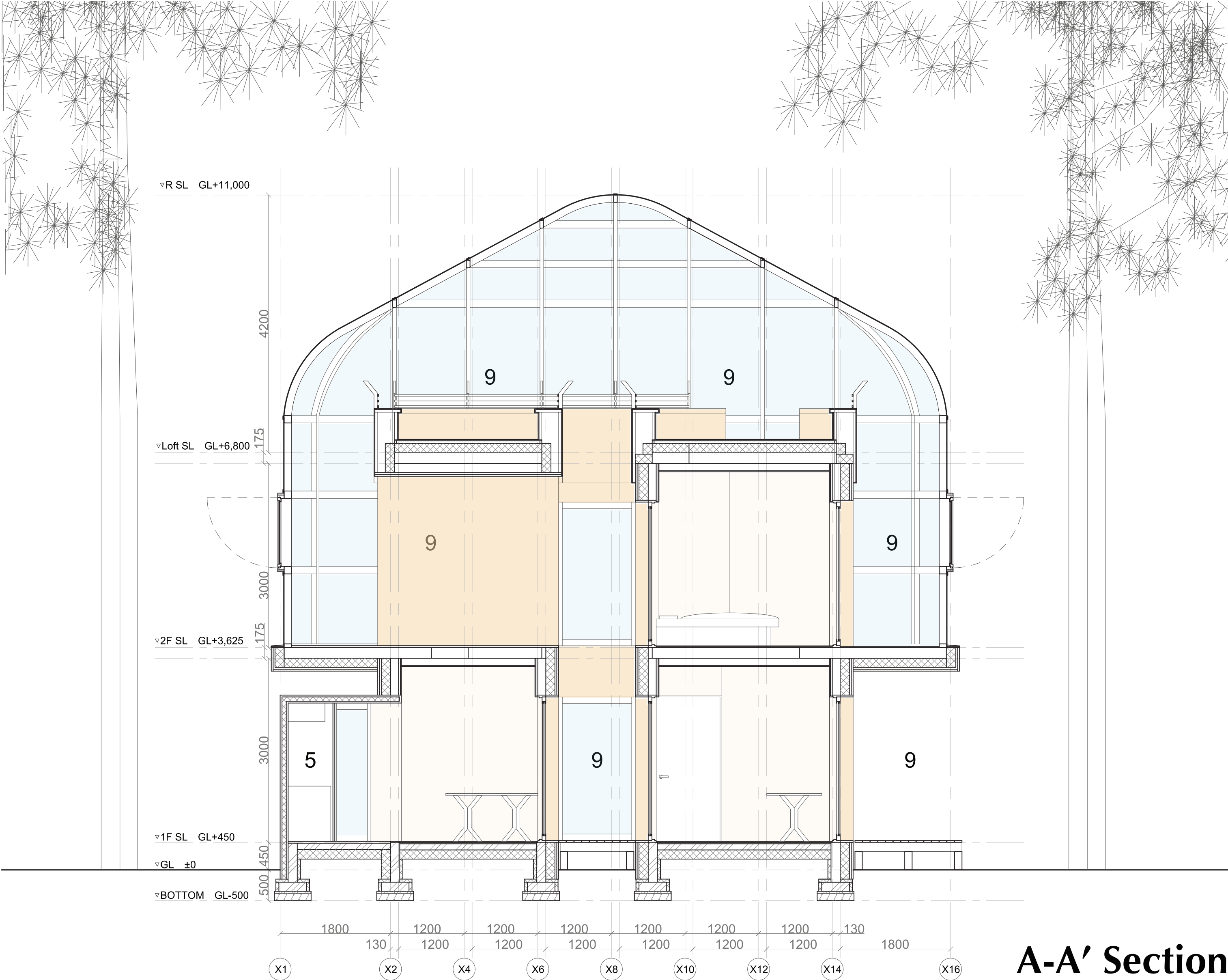
The primary feature of this plan is to use the glass-enclosed semi-outdoor space according to the season. Using the two areas according to the season allows you to use a winter home like a summer cottage without a villa.



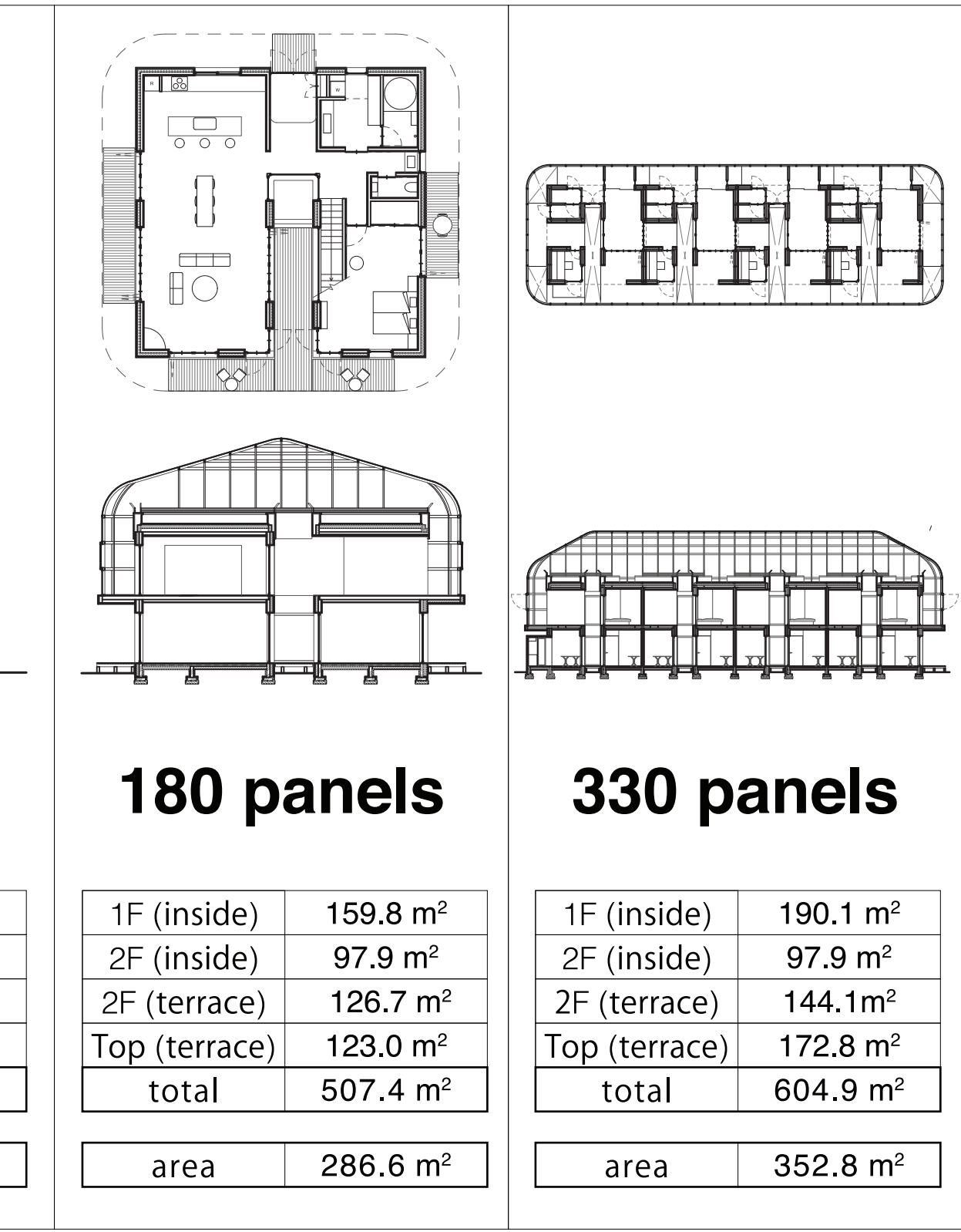
1F plan



2F plan



A-A' Section



<Plenty of Sizes>

Xover-House is designed using a 1.2 x 2.4m module. Therefore, the size can be changed according to the usage and the number of users. The floor plan can be expanded and contracted, and it can be connected side by side to form an apartment building, or it can be developed into a commercial facility such as a tourist information centre or a clubhouse in a yacht harbour.

What is different from the conventional proto-house is that we do not standardize the plan according to the characteristics of the resident, such as for a family of four or office workers, but rather standardize the box, which induces various ways of living. This is the point we are aiming for.

1. Entrance

2. Bathroom

3. Shower

4. Dining room

5. Kitchen

6. Lounge

7. Bedroom I

8. Terrace

9. Solarium

10. Bedroom II

11. Dressing room

12. Sauna

S: 1/50 0 2 4M

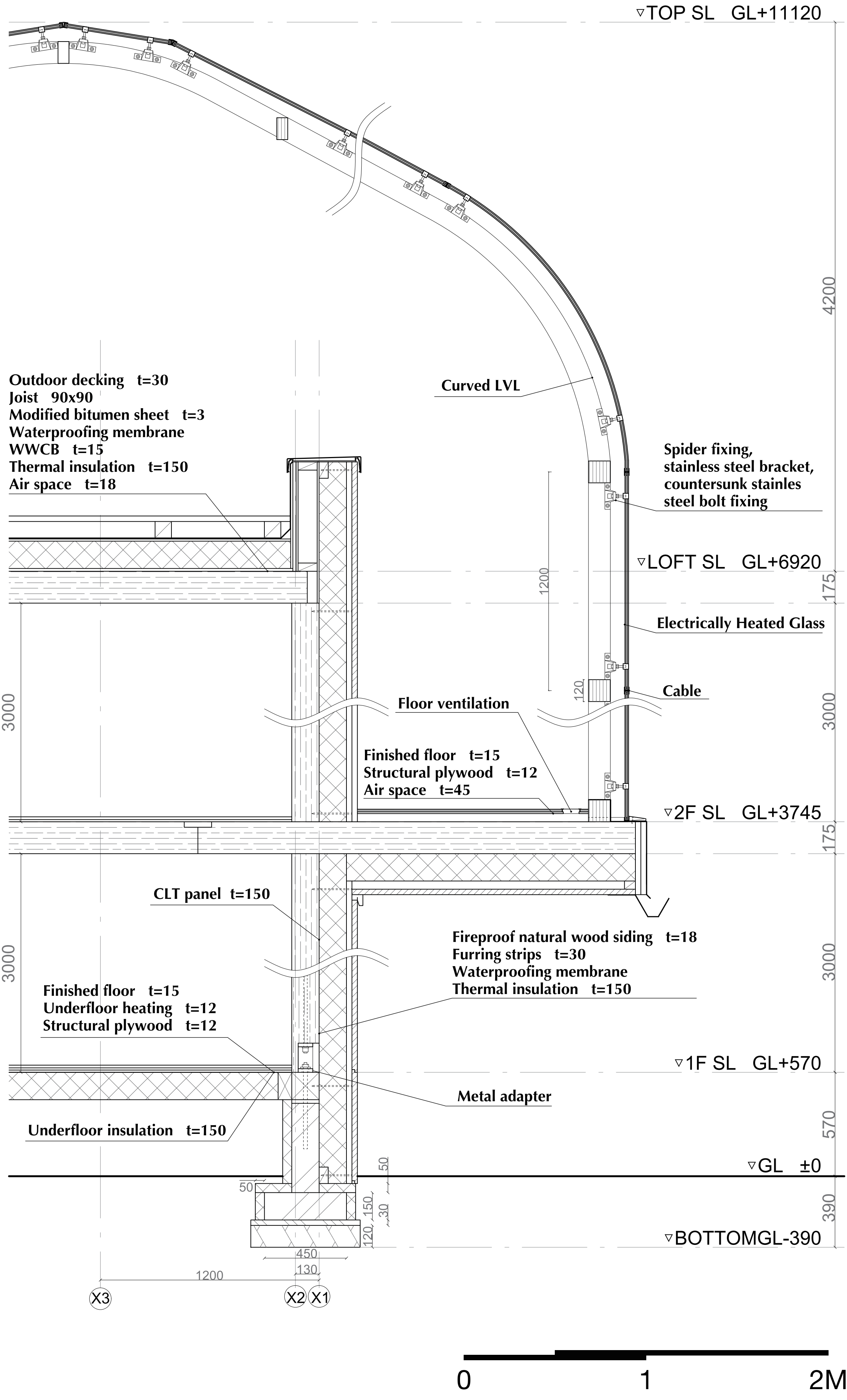
<Drawings of 180 Panel Version>



View from the terrace on the first floor.



Interior view of the second floor.



Detail section S: 1/15

General aerial view of the Small City. This is a proposal for a small city that is made by collecting Xover-House. (IV. Multifunction)

